

LINEAR CUTTER STAPLER AND RELOADING UNITS



QUALITY CARE THROUGH INNOVATION

Product Name	Product	Description
Linear Cutter Stapler with EG Technology	SSAB-60 (3.8mm)	Linear Cutter Stapler 60mm with EG Technology and 3.8mm staple height
	SSAB-60 (4.8mm)	Linear Cutter Stapler 60mm with EG Technology and 4.8mm staple height
	SSAB-80 (3.8mm)	Linear Cutter Stapler 80mm with EG Technology and 3.8mm staple height
	SSAB-80 (4.8mm)	Linear Cutter Stapler 80mm with EG Technology and 4.8mm staple height
	SSAB-100 (3.8mm)	Linear Cutter Stapler 100mm with EG Technology and 3.8mm staple height
	SSAB-100 (4.8mm)	Linear Cutter Stapler 100mm with EG Technology and 4.8mm staple height

Reloads for Linear Cutter Stapler with EG Technology	SADB-60N	RU for Linear Cutter Stapler 60 mm with EG Technology and 3.8mm staple height
	SADB-60D	RU for Linear Cutter Stapler 60 mm with EG Technology and 4.8mm staple height
	SADB-80N	RU for Linear Cutter Stapler 80 mm with EG Technology and 3.8mm staple height
	SADB-80D	RU for Linear Cutter Stapler 80 mm with EG Technology and 4.8mm staple height
	SADB-100N	RU for Linear Cutter Stapler 100 mm with EG Technology and 3.8mm staple height
	SADB-100D	RU for Linear Cutter Stapler 100 mm with EG Technology and 4.8mm staple height

Linear Cutter Stapler with EG Technology



Distributed by Big Green:

0800 424 769 (NZ) | customercaresnz@biggreen.co.nz | biggreen.com.au

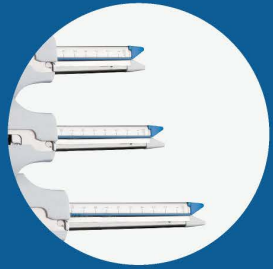


Panther Healthcare Medical Equipment Co., Ltd
Beijing | New York | São Paulo | Toronto | Mumbai

Tel: +8610-80789058
www.pantherhealthcare.com
Email: service@pantherhealthcare.com

www.pantherhealthcare.com

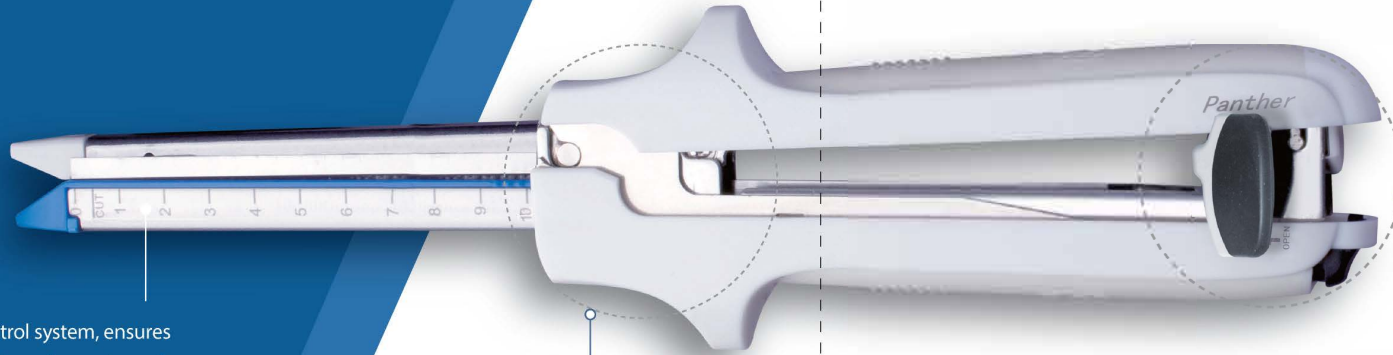
SSAB LINEAR CUTTER STAPLER



Three different staple line lengths of reloading unit, 60 mm, 80 mm and 100 mm, addressed to various tissues



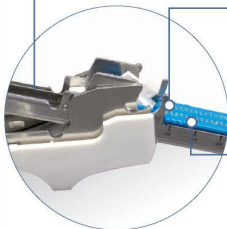
Locking handle design, can be used in one hand operation



Gap control system, ensures the staple perfect B shape formation from proximal to the distal end



Blade protector and cartridge safety lockout: White plastic protector covers blade before and after reloading unit fired, which prevents surgeon or assistant cutting finger on reloading unit blade. Authentic disposable blade, ensures effective cutting, reduces damage on tissue, avoids cross contamination

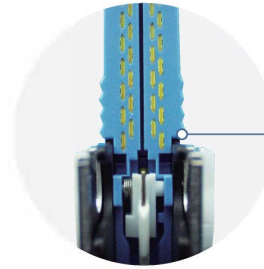


New blade with each cartridge: Guarantees effectively cutting, reduces tissue trauma, avoids cross contamination



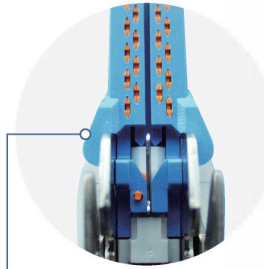
Floating reloading unit design: The reloading unit floats above the edge of the fork before closing the stapler fully, avoids mis-firing

Panther SSAB



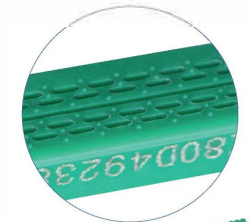
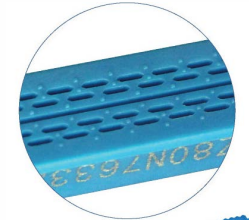
Tissue end position, ensures the tissue to be effectively stapled after cutting, much safer

Other brands



EG TECHNOLOGY

The best gripping for the most challenging procedures



- Atraumatic extra grip.
- Tissue effectively held in the jaws
- Reduced firing force
- Uniform and consistent staple line
- Less slippage with each firing
- Complete stapling and transection line
- Saving cost